

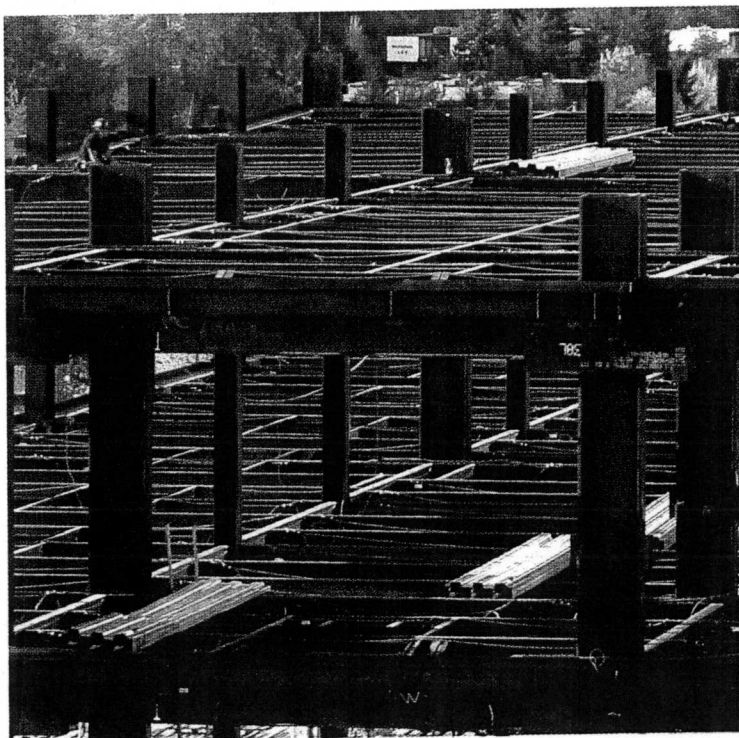
Healthcare Top Projects

www.northwest.construction.com

1
Name of Project: Adventist Medical Center North Pavilion & Parking Structure Expansion 
Owner: Adventist Medical Center
General Contractor: Andersen Construction, Portland Engineers: KPFF Consulting Architect:
Engineers: Portland; Dupont Engineering, James Graham & Associates; Joe Percival & Associates; Geocon Northwest
Subcontractors: Westech Construction, Fought & Company, R.F. Stearns, Columbia Bridge & Iron, Total Mechanical Inc., Oregon Electric Group;
Cost of Project: \$76 Million
Start and Finish Date: November, 2006



Description: This campus expansion project is highlighted by a 4-story, 200,000 sq ft steel framed pavilion containing Cardiovascular Services that will provide a one-stop location for diagnosis and treatment, an emergency department expansion and operating rooms for inpatient surgery. The project also includes a 475 stall, four-level structural steel parking garage, a one-level physical plant expansion, extensive infrastructure upgrades, and existing hospital remodels.



2
Name of Project: Evergreen Hospital & Medical Ctr. Emergency Dept. Expansion & In-Patient Facility
Owner: King County Public Hospital District #2
Architect: Mahlum Architects
General Contractor: Howard S. Wright Construction Co.
Engineers: Magnusson Klemencic Associates, Seattle; Notkin Engineering, Inc., Seattle; Sparling, Seattle.
Subcontractors: CECO Concrete Construction, LLC; Cochran Inc.; Hermanson Company LLP; Hos Bros. Construction, Inc.; McKinstry Co.
Cost of Project: \$73.8 Million
Start and Finish Date: March 2005 – April 2007

Description: An expansion that adds 547,000-sq ft to the campus of Evergreen Hospital, this ground-up project included construction of a concrete and steel building, with a two-story concrete structure for the Emergency Department, an eight-level steel frame Patient Care Facility, and three levels of below grade parking.